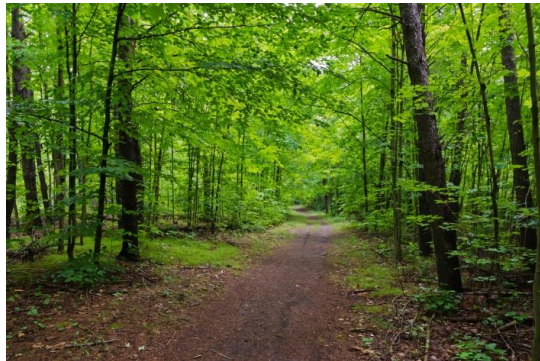


Wednesday 13th January

Understanding the World



L.o- To recognise similarities and differences between woodland animals

Following on from the activity yesterday to share your understanding about woodland animals, we are going to find out more!

Mrs Clements takes us on an adventure to find out more! Follow the link below

<https://www.youtube.com/watch?v=4ucApoDFNFk>

Follow up



Compare the squirrel to one of the other woodland tree animals, identifying the similarities and differences.

